



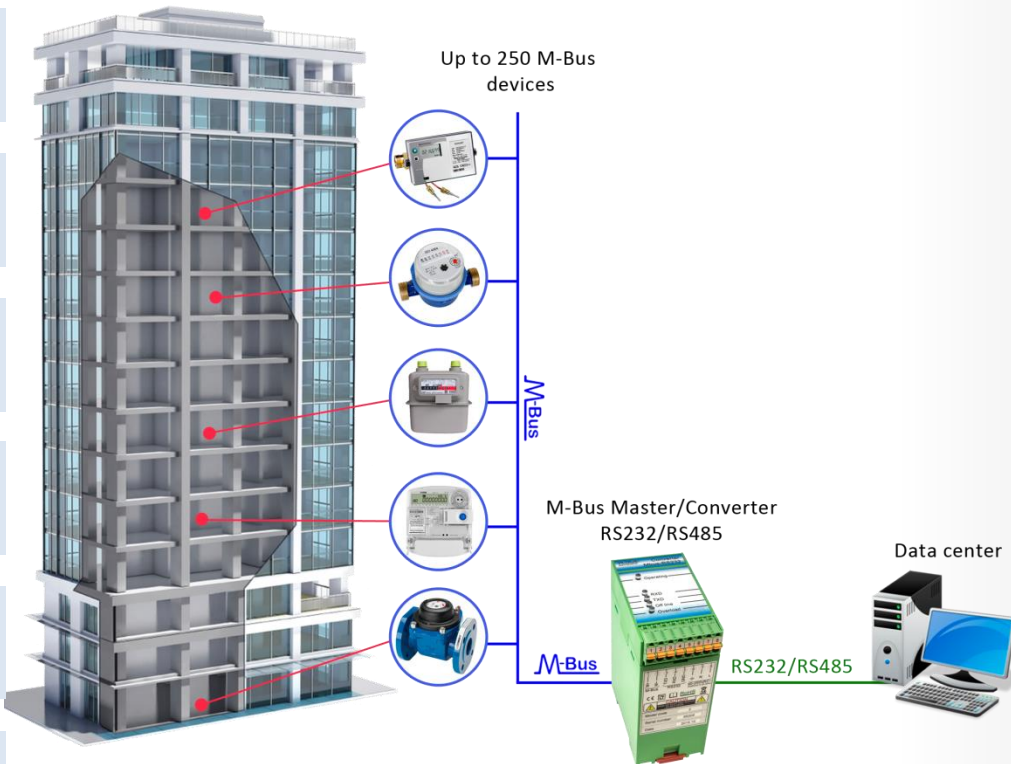
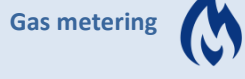
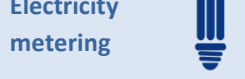
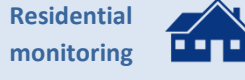
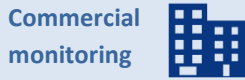
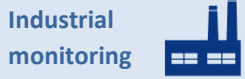
OVERVIEW

M-Bus Master / M-Bus Converter is dedicated to convert M-Bus signal to RS232/RS485 and vice versa. Up to 250 M-Bus devices can be connected to M-Bus Master / M-Bus Converter.

FEATURES

- MAX amount of M-Bus devices: 250
- RS485 transmission direction: automatic
- M-Bus short connection protection: yes
- Power supply: 90-250V ~, 50-60Hz
- Mounting type: on DIN rail

Application



ORDERING CODE

M-BUS RS232

M-BUS RS485

TECHNICAL SPECIFICATIONS

Description	M-Bus Master/Converter (M-Bus - RS232/RS485)
RS232	up to 15 m, speed up to 9600 bods
RS485	automatic chose of direction, max 32 transivers, speed up to 9600 bods
M-Bus	up to 250 devices
General	
Power supply	90-250V~, 50-60Hz
Over-voltage protection	>1000V
Power consumption	300mA MAX
M-Bus line power	mark 36-40V, space 24-27V
Adjustment to M-Bus loads	Automatic
M-Bus short circuit event current	≥500mA
M-Bus short circuit reaction time	Configurable, 1-4s.
Recover after short connection	Configurable, 10-60s.
Physical characteristics	
Dimensions	105x75x45 mm
Weight	170 g
Mounting type	on DIN rail
Protection type	IP20
Climate conditions	
Operating temperature	-20 to +50°C
Storage temperature	-50 to +70°C
Humidity range	5 – 95%, non-condensing
LED indication	
Off line	M-Bus not loaded (ON)
Overload	M-Bus short connection
Operating	M-Bus power (ON/Off)
RXD	M-Bus data transfer
TXD	M-Bus data receive
Regulatory approvals	
<i>Electromagnetic compatibility</i>	
EN 55022:2010	
EN 55024:2010	
EN 61000-4-2:2009	
EN 61000-4-3:2006	
EN 61000-4-3:2006/A1:2008	
EN 61000-4-3:2006/A2:2010	
EN 61000-4-4:2004	
EN 61000-4-4:2004/A1:2010	
EN 61000-4-6:2009	
<i>Safety</i>	
EN 60950-1:2006+A1:2010+A11:2009+A12:2011	
Other features	
Warranty period	2 years