

INTERFACES

RS232

RS485

M-Bus

Data/Req

Current Loop


Ethernet


GSM/GPRS


8 x Analog IN

8 x Discrete IN


8 Discrete OUT

Industrial monitoring 

Commercial monitoring 


Residential monitoring 

Water/Heat metering 

Electricity metering 

Gas metering 

Controllers metering 

Sensors monitoring 



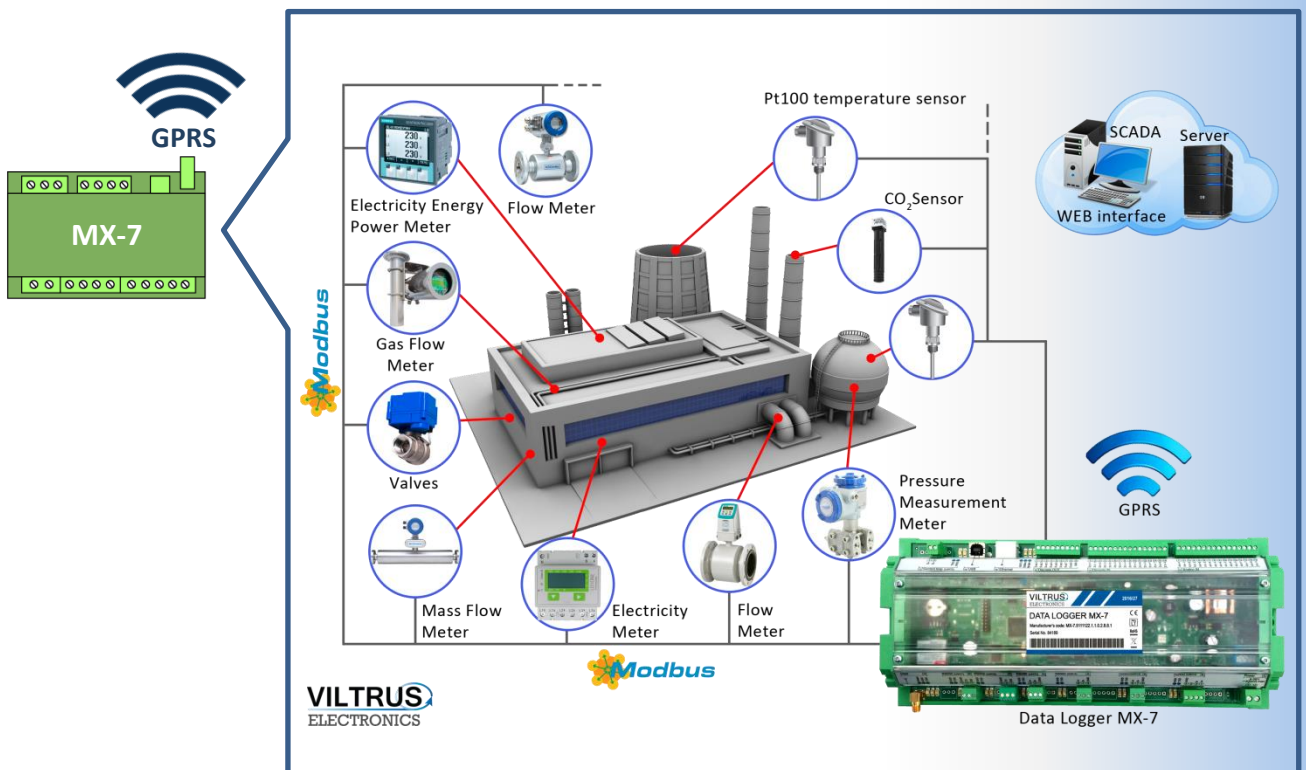
FEATURES

- Reading data from meters (heat, water, gas, electricity...), sensors, controllers
- Supported interfaces: M-Bus, RS232, RS485, Current Loop, USB, Data/Req, GSM/GPRS, Ethernet, Analog IN, Discrete IN/OUT
- Independent data log with real time stamp
- Remote communication over GSM/GPRS, Ethernet
- Two universal (jumper switchable) interfaces
- Galvanically isolated interfaces and power supply
- Power supply for external powering of meters
- Memory expansion: up to 8 GB using micro SD card

MX-7 data logger is dedicated for real time logging and analyzing of data. Using GPRS/GSM or Ethernet, logger sends data to remote users / server. MX-7 can also communicate with other controllers and sensors. Device has wide range of optional interfaces and protocols (Modbus RTU, Modbus TCP/IP, IEC60870-5-104: 2000, etc.) and can read any kind of meters, controllers and sensors equipped with standard protocols.

MX-7 can also measure and store different kinds of discrete inputs (limit switches, alarms, push buttons, relay contacts...), discrete outputs (remote management) and analog inputs (current/voltage).

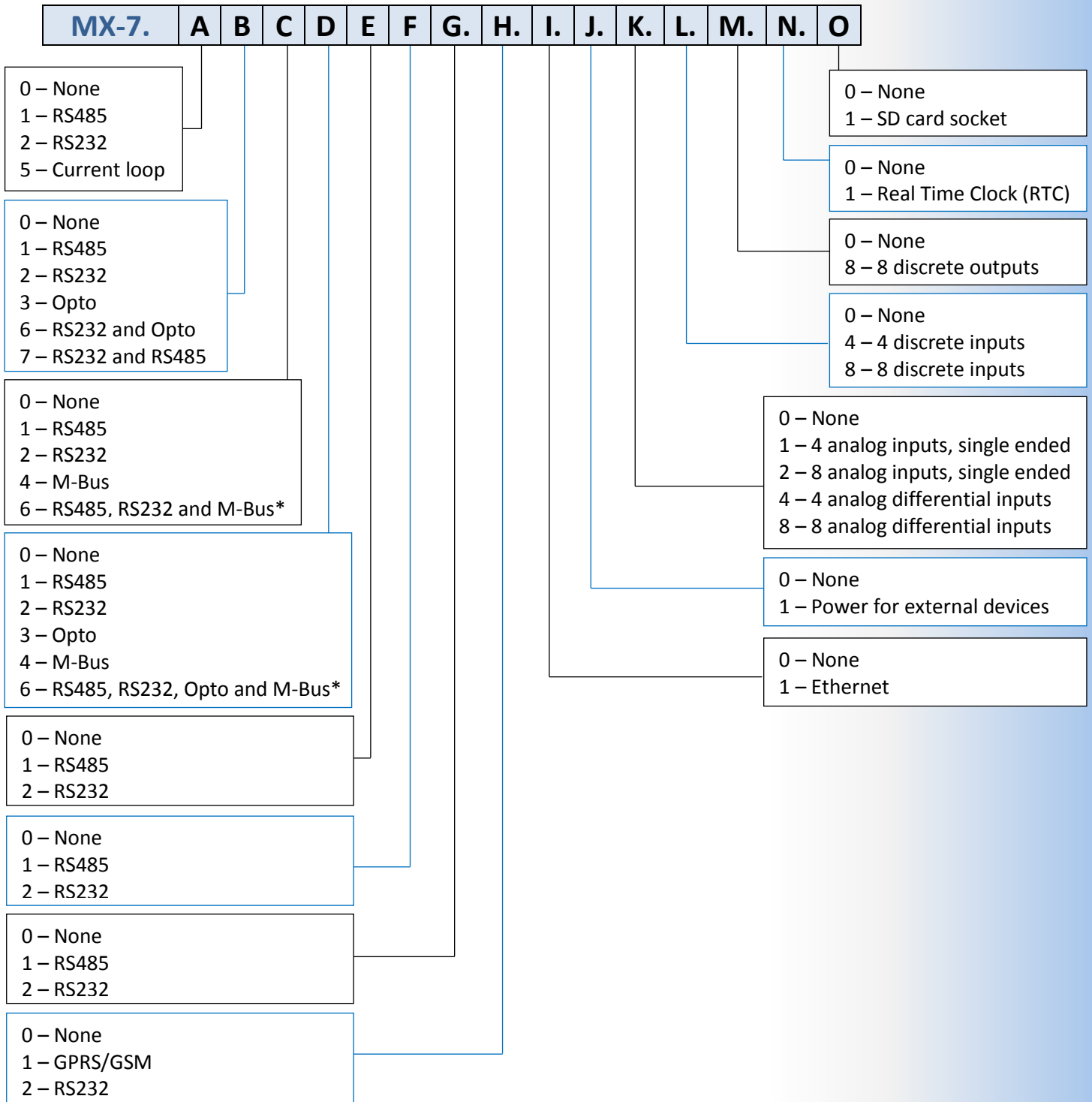
MX-7 data logger is ideal for smart metering, telemetry, data acquisition, remote devices control, measure and store different kinds of analog and discrete I/O applications, process monitoring.



TECHNICAL SPECIFICATIONS

Description	MX-7 data logger
CPU	ARM7
Flash	archive storage up to 8 MB, independent data storage without power about 5 years
SD card support	micro SD card up to 8 GB
Interfaces	
RS232 (8 ports)	distance up to 15 m, speed up to 19,2 Kbit/s
RS485 (7 ports)	distance up to 1,2 km, max 32 transivers, speed up to 19,2 Kbits/s
M-Bus (2 ports)	up to 16 M-Bus devices (up to 8 M-Bus devices for each M-Bus port)
Data/Req (2 ports)	(KAMSTRUP) data transfer interface
Current Loop (1 port)	25-27V, 14-20mA, up to 6 km, speed up to 19,2 Kbit/s
GSM/GPRS	4 band 850/900/1800/1900 MHz
Ethernet	10/100 Mbps, RJ45, distance up to 100 m
USB	type B, ver. 2,0
Discrete IN	8 sink contact
Discrete OUT	8 open collector, >50VDC and >500mA
Analog IN	8 current 0/4-20mA or 0-5mA, error 0,15%
Protocols	
Modbus RTU, Modbus TCP/IP, IP, ICMP, UDP, TCP, DHCP, PPP, ARP, SNTP, IEC60870-5-104:2000, DynDNS, FTP server, FTP client, DNS client	
General	
Power supply	9-36 VDC
Over-voltage protection	>1000V
Capacity	300mA max
Power for external devices	3,7/5/6/8/10 VDC (20mA)
Certifications	
Electromagnetic compatibility	EN 55022:2000+A1+AC:2002+A2:2003
	EN 55024:2000+A1:2003+A2:2003
	EN 61000-4-2+A1+A2:2002
	EN 61000-4-3+A1:2004
	EN 61000-4-4:2005
	EN 61000-4-5:2002+A1:2003
Safety	EN 61000-4-6:2002+A1:2003
	EN 61010-1:2002
Physical characteristics	
Dimensions	277x128x50 mm
Weight	600 g
Mounting type	on DIN rail
Protection type	IP20
Climate conditions	
Operating temperature	-25 to +60°C
Storage temperature	-40 to +60°C
Humidity range	5 – 95%, non-condensing
LED indication	
Power	
Status of discrete input, for each port	
Serial ports read/write for each port	
GSM/GPRS modem status	
Ethernet status	
Other features	
Real time clock	+
M-Bus auto setup	+
Warranty period	2 years

ORDERING CODE



* - jumper selectable

Example: **MX-7.1243200.1.1.0.4.8.8.1.0** (RS485, RS232, M-Bus, Opto, RS232, GPRS, Ethernet, 4 Analog IN, 8 Discrete IN, 8 Discrete OUT, RTC)