



OVERVIEW

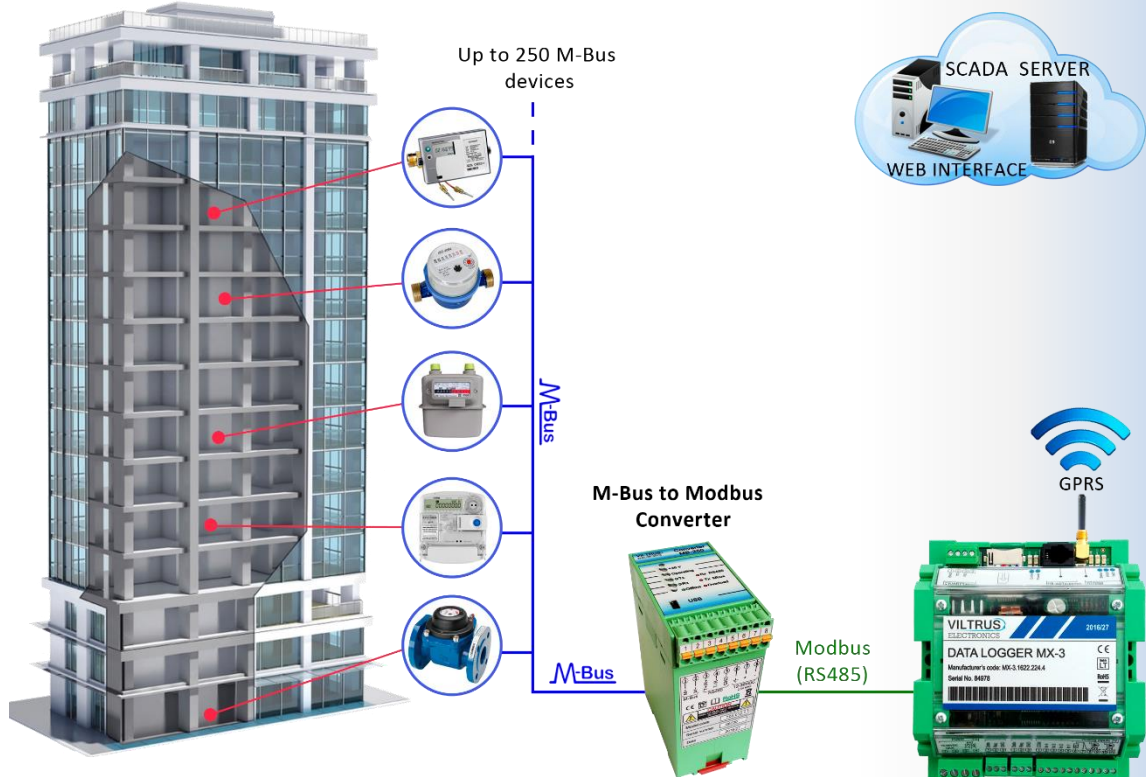
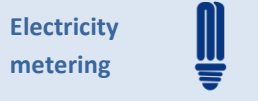
M-Bus to Modbus RTU (RS485/RS232) Converter is dedicated to convert M-Bus signal to Modbus (RS485/RS232) and to allow M-Bus devices to communicate on a Modbus network.

FEATURES

- Device versions:
 - Converter dedicated to support up to 10 units of M-Bus meters
 - Converter dedicated to support up to 50 units of M-Bus meters
 - Converter dedicated to support up to 80 units of M-Bus meters
 - Converter dedicated to support up to 100 units of M-Bus meters
 - Converter dedicated to support up to 250 units of M-Bus meters
- Baud rate: from 300 to 38400 bit/s
- M-Bus short connection protection
- M-Bus and Modbus (RS485/RS232) interface is galvanically isolated
- Power supply: 12-36 VDC



Application



TECHNICAL SPECIFICATIONS

Description	M-Bus to Modbus Converter (M-Bus - RS485/RS232)
RS485	distance up to 1,2 km, max 32 transivers
RS232	distance up to 15 m
M-Bus	up to 10 / 50 / 80 / 100 / 250 M-Bus devices
Baud rate	from 300 to 38400 bit/s
General	
Power supply	12-36 VDC
Over-voltage protection	>1000V
Power consumption	not loaded up to 3,5W, fully loaded up to 20W
M-Bus line power	mark 36-40V, space 24-27V
Adjustment to M-Bus loads	Automatic
M-Bus short circuit event current	≥500mA
M-Bus short circuit reaction time	Configurable, 1-4s.
Recover after short connection	Configurable, 10-60s.
Physical characteristics	
Dimensions	105x75x45 mm
Weight	175 g
Mounting type	on DIN rail
Protection type	IP20
Climate conditions	
Operating temperature	-25 to +60°C
Storage temperature	-40 to +60°C
Humidity range	5 – 95%, non-condensing
LED indication	
Offline	M-Bus not loaded (ON)
Overload	M-Bus short connection
Operating	M-Bus power (ON/Off)
TX	M-Bus data transfer
RX	M-Bus data receive
Other features	
Warranty period	2 years

ORDERING CODE

Order No.	Product
MB-10 RS485	M-Bus to Modbus (RS485) converter for 10 units of M-Bus devices
MB-50 RS485	M-Bus to Modbus (RS485) converter for 50 units of M-Bus devices
MB-80 RS485	M-Bus to Modbus (RS485) converter for 80 units of M-Bus devices
MB-100 RS485	M-Bus to Modbus (RS485) converter for 100 units of M-Bus devices
MB-250 RS485	M-Bus to Modbus (RS485) converter for 250 units of M-Bus devices
MB-10 RS232	M-Bus to Modbus (RS232) converter for 10 units of M-Bus devices
MB-50 RS232	M-Bus to Modbus (RS232) converter for 50 units of M-Bus devices
MB-80 RS232	M-Bus to Modbus (RS232) converter for 80 units of M-Bus devices
MB-100 RS232	M-Bus to Modbus (RS232) converter for 100 units of M-Bus devices
MB-250 RS232	M-Bus to Modbus (RS232) converter for 250 units of M-Bus devices