

## INTERFACES

Wireless M-Bus


GSM/GPRS

4G

RS485

USB

## Application


Industrial monitoring 

Commercial monitoring 

Residential monitoring 

Water/Heat metering 

Electricity metering 

Gas metering 

Sensors monitoring 

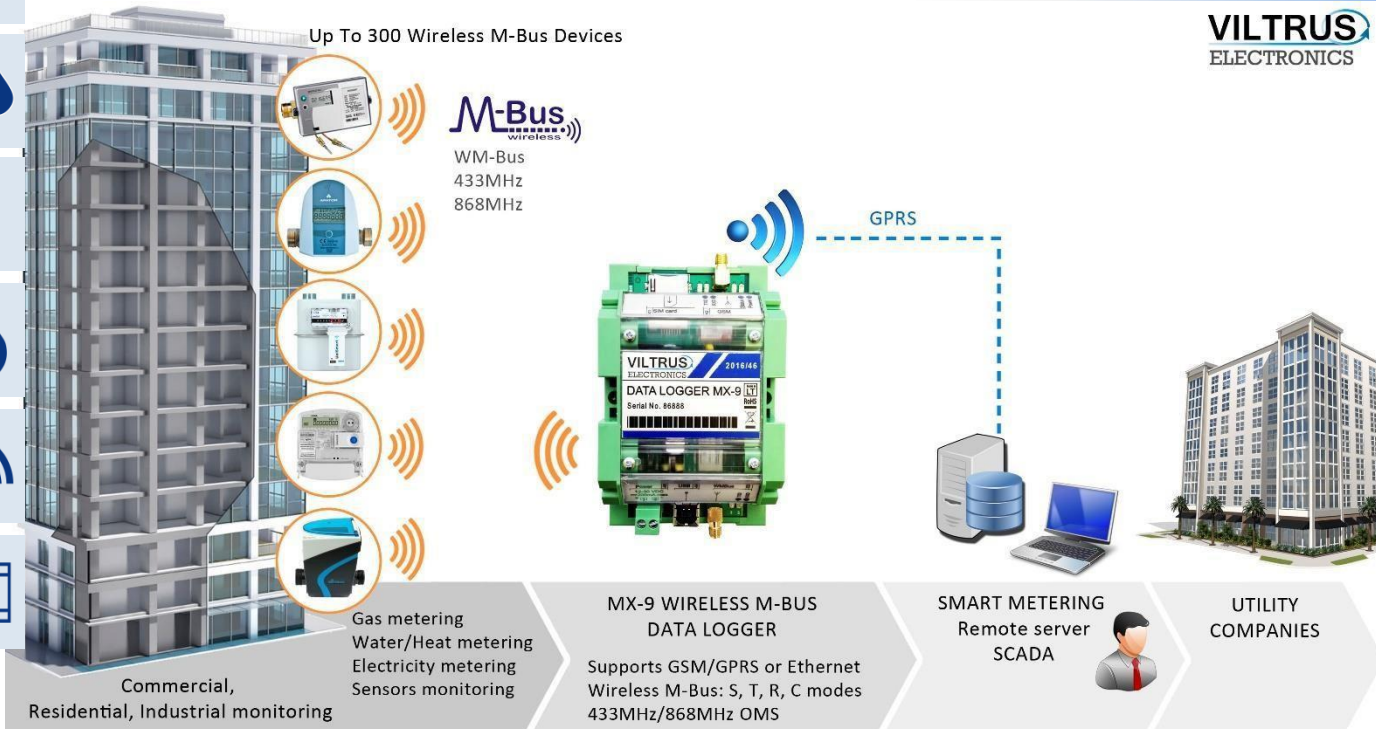
Controllers 

## FEATURES



- Reading data from meters (heat, water, gas, electricity...), sensors and controllers
- Supported interfaces: Wireless M-Bus, USB, GSM/GPRS, 4G, RS485
- Wireless M-Bus supports:
  - ✓ S, T, R, C modes (169MHz/433MHz/868MHz)
  - ✓ OMS (Open metering system)
  - ✓ Store data up to 500 Wireless M-Bus devices
  - ✓ support up to 2000 wireless M-bus devices in router mode
- Remote communication over GSM/GPRS or 4G
- Galvanically isolated interfaces and power supply

**MX-9** data logger is dedicated for collecting the data via Wireless M-Bus and real time logging, analyzing of data. Using GPRS/GSM or 4G, logger sends data to remote users / server. MX-9 can also communicate with other controllers and sensors. Device has wide range of optional interfaces and protocols and can read any kind of meters, controllers and sensors equipped with standard protocols. Perfect for telemetry/monitoring, control and smart metering.



## TECHNICAL SPECIFICATIONS

Description	MX-9 Mini Wireless M-Bus Data Logger
CPU	ARM7
Flash	archive storage up to 8 MB, independent data storage without power about 5 years
SD card support	micro SD card up to 8 GB
Interfaces	
Wireless M-Bus (1 port)	up to 250 Wireless M-Bus ( T, S, R, C modes, 169MHz/433MHz/868MHz) devices
GSM/GPRS	4 band 850/900/1800/1900 MHz
USB	ver. 2,0, type B
RS485 (1 port)	distance up to 1,2 km, max 32 transivers, speed up to 19,2 Kbits/s
4G	2 band, depending on market 850/1900MHz, 900/2100MHz or 800(850)/2100MHz
Protocols	
Modbus TCP/IP, IP, ICMP, UDP, TCP, DHCP, PPP, ARP, SNTP, IEC60870-5-104:2000, DynDNS, FTP server, FTP client, DNS client, Wireless M-Bus	
General	
Power supply	12-30 VDC
Over-voltage protection	>1000V
Capacity	300mA max
Power for external devices	3,7/5/6/8/10 V (<20mA)
Interface galvanic isolation	500V
Physical characteristics	
Mounting type	on DIN rail
Protection type	IP20
Climate conditions	
Operating temperature	-25 to +65°C
Storage temperature	-40 to +65°C
Humidity range	5 – 95%, non-condensing
Programing and updating	
Remote	GSM/GPRS, 4G
Locally	USB
LED indication	
Power	
Serial ports read/write for each port	
GSM/GPRS, 4G modem status	
Other features	
Real time clock	+
M-Bus auto setup	+
Warranty period	2 years